



Imini ye Krismesi

IsiXhosa

Badikazi Gumpe



Imini ye Krisimesi

Ibhalwe ngu Badikazi Gumpe
Izotywe ngu Ntibile Zonke



IINGCEBISO ZOKUSETYENZISWA KWALA MABALI NGOOTITSHALA NABAZALI

1. Eli bali lilungele abafundi abaneminyaka esi-6 ukuya kweli-8.
2. Eli bali linamagama angama **418**. Khethe amagama athile wenze amakhadi okufunda ngokusebenzisa iibhokisi ezindala okanye iphepha eliqinileyo
3. Abafundi mabafunde amagama abhalwe kula makhadi bekhwaza.
4. Sebenzisa isibonisi xesha, umakhala ekhukhwini wakho okanye iwotshi ukhangela ixesha alithathileyo umntwana efunda igama ngomzuzu. Bhala encwadini ukhangela ukuba inani lamagama afundwa ngomzuzu ukuba ayanda na iveki zilandelelana.
5. Cela abantwana ukuba bakufundele isiqwenga esinye wandule ukubabuzwa ukuba ibali eli lingantoni.
6. Sebenzisa umongo webali ukubuzwa imibuzo ngento eyenzeka ebalini.



Le mini izolile kwaye nelanga lishushu kamnandi.

UBella nabahlobo bakhe uLinda noNoni babhiyozela olu suku lweKrisimesi ecaweni ekwilali yabo.

Baza kubukela iziketshi badlale unochele nebhola.



Abo benza iziketshi balinganisa ukuzalwa kuka Yesu.

Iziketshi zidlalwa ngamantombazana namakhwenkwana amancinane. Banxiba impahla efanelekileyo.



“Umama wam undithengele ilokhwe entsha ebomvu, izihlangu ezimhlophe kunye nelaphu elibomvu lokubopha iinwele,” watsho uBella evuya.



“Wena Linda uthengelwe ntoni?” wabuza uBella. “Yho! Jongani umama undithengele ilokhwe etyheli nezihlangu ezimhlophe,” watsho uLinda.

Ndivuya kakhulu ndiyamthanda umama wam kwaye naye uyandithanda.

Noni kutheni wena unxibe impahla endala?
Awuyithengelwanga impahla entsha
ngumama wakho?
Mna ndingalila kakhulu xa
ndingathengelwanga impahla yeKrisimesi.



“Ungalili Noni, umama wakho uza kukuthengela impahla entle kunyaka ozayo,” watsho uLinda ekhathazekile esanga uNoni. “Nawe uzakonwaba unxibe impahla entle ngemini yeKrisimesi,” akunjalo Bella?

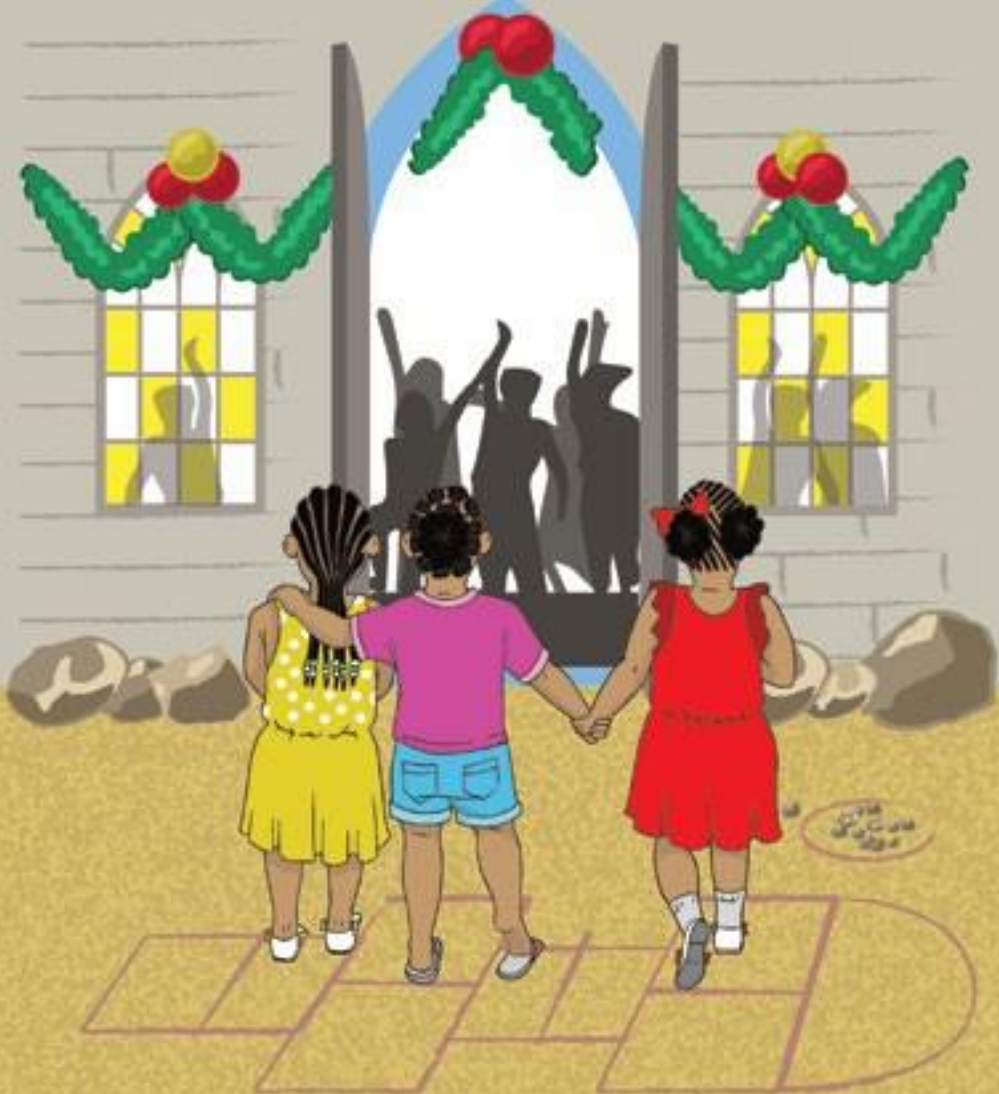




Endaweni yempahla entle yeKrisimesi
umama wam undithengele iimpahla
zesikolo.

Undithengele ubhaka wokufaka iincwadi
nezihlangu zesikolo.

Ndiyamthanda nowam umama, watsho
uNoni.



“Masihambeni siyokubukela iziketshi ecaweni. Siza kudlala unochele nebhola ukugqiba kwethu,” watsho uBella. “Heke! Sada safika ecaweni, sele ziqalile iziketshi. Sakugqiba ukubukela iziketshi, siza kutya izimuncumuncu, sidlale unochele nebhola.”



“Jongani umthi weKrisimesi uyayokozela. Kukho iibhaluni ezinemibala emihle, nezipho ezisongelwe ngamaphepha amenyezelayo. Mhmm tana! akwaba besinokufumana izipho sobathathu.”



“Yizani nibone isipho sam, yifowuni.
Ndiza kufowunela umama wam, uBobo
noLolo,” watsho uLinda.

Ndiyasithanda kakhulu isipho sam.

“Wena Noni ufumene ntoni?”

“Heke! Heke! ndifumene uTeddy Bear
othethayo, ohlekayo nokwazi ukubala
aphele kumashumi amahlanu.

Oh! Ndiyasithanda kakhulu isipho sam.”



“Wena Bella ufumene ntoni?” wabuza uNoni.
“Ndifumene ipakethe yeebhiskithi, watsho
equmbile.

Wowu! akwaba bendinguwe Noni, nam
ndiyamthanda uTeddy Bear othethayo,
ohlekayo nobalayo.

Ungakhathazeki Bella siza kudlala sonke
ngoTeddy Bear.”

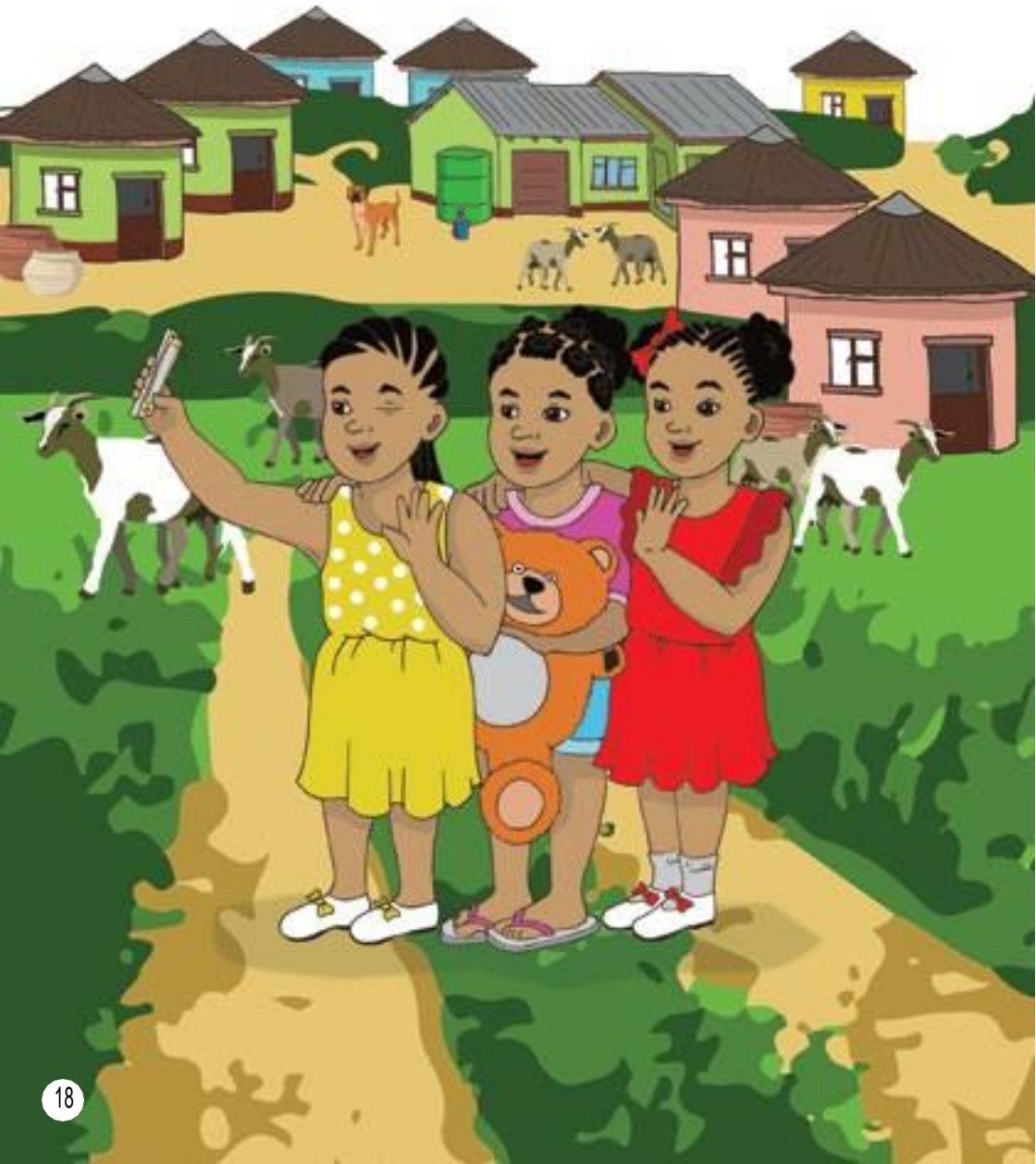


Batya izimuncumuncu wena keyiki, jeli, khastadi, amaqebengwana neesaladi. Bakugqiba ukutya badlala unochele nebhola. “Mhmmm! akwaba lungaphinda lufike kamsinya usuku lweKrisimesi sizokonwaba kwakhona.”

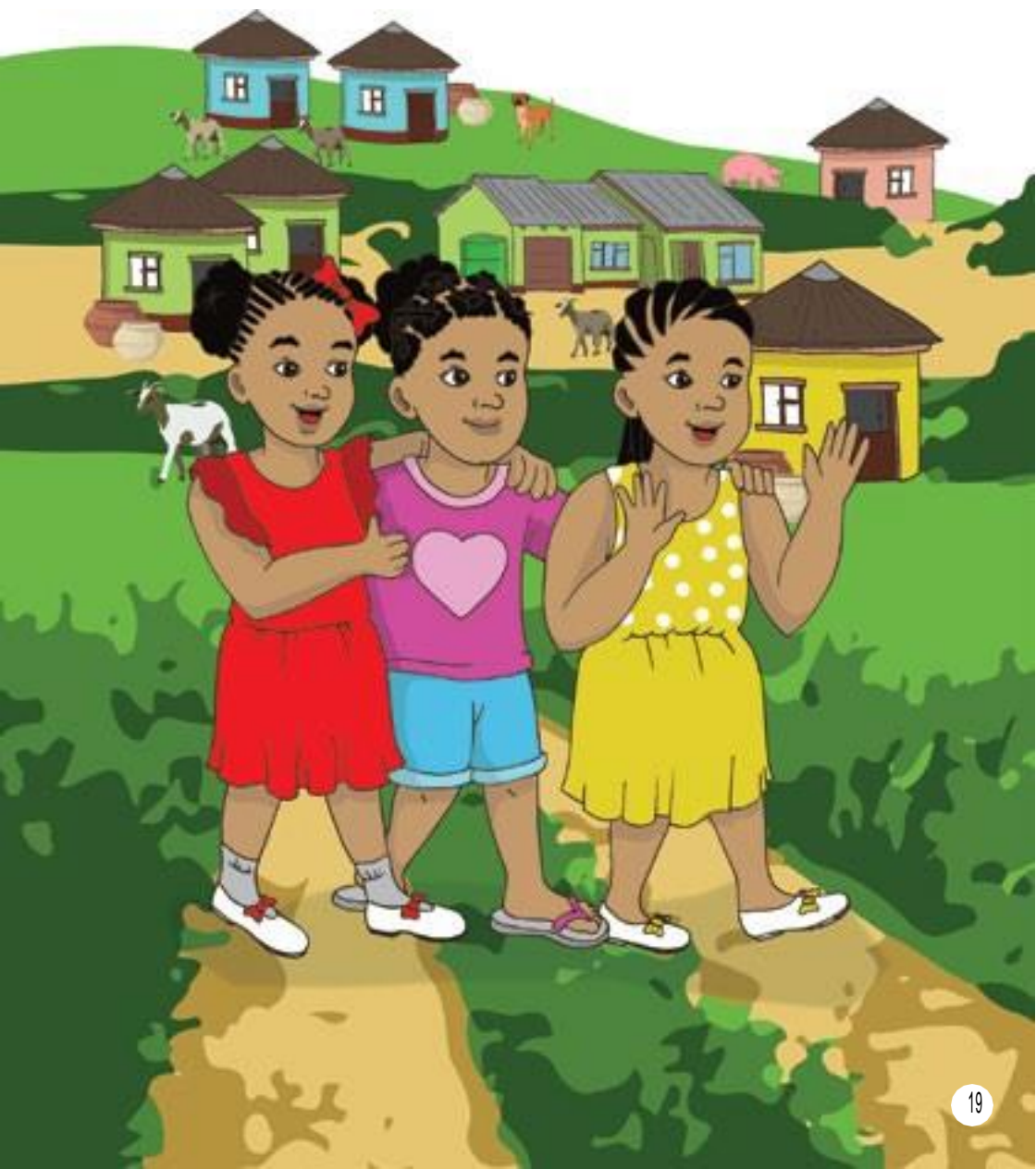
“Xa ndifika ekhaya ndiza kufowunela uBobo noLolongefowuniyam,” watsho uLinda.
“Nam xa ndifika ekhaya ndiza kudlala ngoTeddy Bear wam,” watsho uNoni.
“Mna ndizakutya iibhiskithi zam ndakufika ekhaya,” watsho uBella.



“Sobathathu siyabathanda oomama bethu,
basithengele impahla entle nezipho ezihle,
basiphekele ukutya okumnandi.”



Kumnandi ngemini yeKrisimesi.
Wonke umntu uyaluthanda olu suku kuba
yimini yesikhumbuzo sokuzalwa kukaYesu.



IMIBULELO KWABA

Ibhalwe ngu
Badikazi Gumpe

Izotywengu
Ntibile Zonke

Umhleli 1
Notozi Mgobozi

Umhleli 2
Ntombikayise Njadayi

Umhleli 3
Nelisa Mviko

Umhleli 4
Nopasika Xapa

Umhleli
PixelPing Design



ISBN 978-1-920702-13-7



basic education

Department:
Basic Education
REPUBLIC OF SOUTH AFRICA

