



Mphikizano wo tsutsuma wa swihari

Xitsonga



Harold Gondwe

Mphikizano wo tsutsuma wa swihari

Yi tsariwile hi Mmapadi Mametja
Swifaniso swi dirowile hi Heidi-Kate Greeff

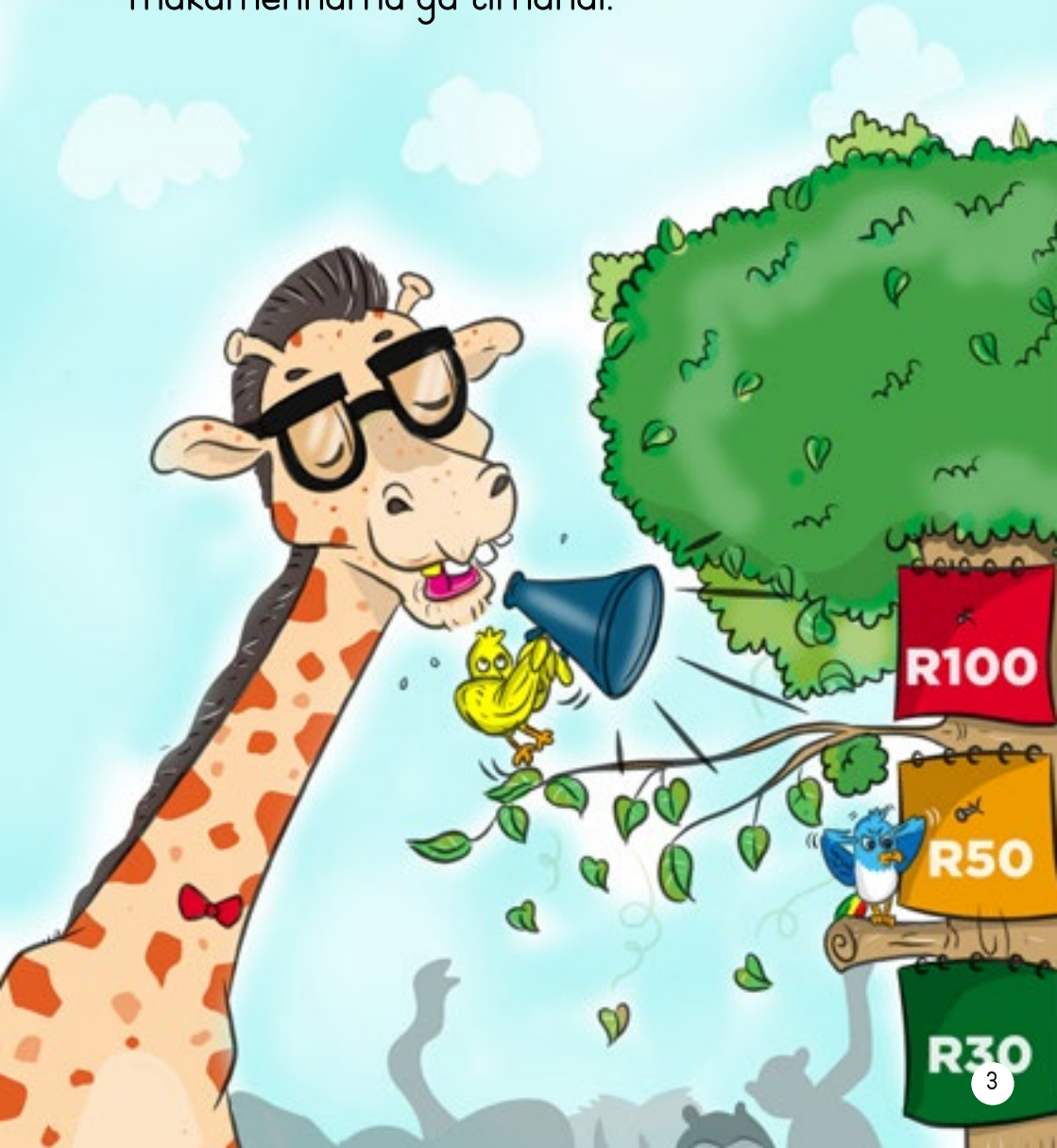


Xi hundzuluxeriwile hi Cohen Shipalana

Ku humesiwile xirhambo eka swihari hinkwaswo ku titsarisela ku nghenela mphikizano wa ku tsutsuma. Ntsengo wa ntsariso eka mphikizano wa ku tsutsuma a ku ri khume ra tirhandi. Swihari a swi fanele ku tsutsuma mpfhuka wa ntlhanu wa tikhilomitara.



Xihari lexi nga humelela xi ta kuma dzana ra tirhandi. Lexi nga ta khoma xiyimo xa vumbirhi xi ta kuma makumentlhanu wa tirhandi. Lexi nga ta khoma xiyimo xa vunharhu xi ta kuma makumenharhu ya tirhandi.



N'wampfundla a tsakile swinene hi ta mphikizano lowu wo tsutsuma wa swihari, kutani xikan'wekan'we u sungurile ku endla vutiolori. "Mhakakulu hileswaku ndzi se ndzi kumile xidlodlo xo sungula, ku hava na un'we wa n'wina loyi a nga ta ndzi siya; hinkwenu ma swi tiva leswi."



“N’wampfundla u tinyungubvisa ku tlurisa mpimo. Xana u swi tivisa ku yini leswaku u ta humelela hikuva a hi se sungula mphikizano wa ku tsutsuma?” Ku vutisa N’wamfutsu a hlundzukile.



“N’wamfutsu, xana u ehleketa leswaku i mani loyi u nga ta n’wi siya?”

“Ndza kombela, u nga kali u tikarhata hi ku ehleketa leswaku u ta phikizana na hina hi rivilo.” Ku vula N’wampfundla a ri karhi a monya N’wamfutsu.



Siku ra mphikizano wo tsutsuma ri fikile. Swihari hinkwaswo a swi ambale swiburukwana swo tsutsuma hi swona. Xiburukwana xin'wana na xin'wana a xi ri na nomboro leyi tsariweke endzhaku ka xona. Ntsako a wu ri lowu vonakaka swinene eka swihari hinkwaswo, hambi N'wamfutsu na yena a vonaka a tilulamiserile ku nghenela mphikizano lowu.



Ku twakarile rito kusuka eka makhirofoni ri ku:
“Mphikizano wo tsutsuma wu lava ku sungula,
un’wana na un’wana a tilulamisele.” Rito leri
ri landzeriwile hi mpfumawulo wa xibamu lexi
lerisaka ku suka hi rivilo.” Phaaa! Leswi a swi
kombisa leswaku se mphikizano wu sungurile.



Mphikizano wo tsutsuma wu sungurile exigangeni xa patu. N'wamfutsu u ehleketisisile hi ta kungu ra ku humelela eka mphikizano lowu. Kutani N'wamfutsu u tumbetile nhloko na milenge endzeni ka miri wakwe. Endzhaku ka swona, N'wamfutsu u khungulukile kunene ku kondza a ya fika kusuhi na laha ku biwaka kona ntambhu.



N'wamfutsu u langutisile endzhaku. U vonile N'wampfundla na swihari leswin'wana empfhukeni swi ri karhi swi tsutsuma swi kongomile laha ku biwaka kona ntambhu. N'wamfutsu a a ri kusuhi swinene na laha ku biwaka kona ntambhu, kutani a twiwa a ri karhi a ku: "Ndzi muhluri!" U vurile leswi a ri karhi a tibela mavoko.



Endzhakunyana N'wampfundla u tshinerile laha ku biwaka kona ntambhu kutani a twiwa a ri karhi a ku: "Swi nge endleki leswi! Swi ta njhani N'wamfutsu a hlula eka mphikizano wa ku tsutsuma a ri karhi a nga swi koti ku tsutsuma?" "A ku endliwe vulavisisi eka mhaka leyi." "Ntiyiso hileswaku hi mina muhluri!" Ku vula N'wamfutsu hi ku tinyungubyisa a ri karhi a hlekelela.



SWIKHENSO

Yi tsariwile hi
Harold Gondwe

Swifaniso swi dirowile hi
Moses Dhladhla

Muhleri
Mavis Ndlovu

Mutumbuluxi
PixelPing Design

Muhundzuluxeri
Cohen Shipalana

Muhlerinkulu
Mafemani Baloyi



ISBN 978-0-638-00711-4



basic education
Department:
Basic Education
REPUBLIC OF SOUTH AFRICA

