



# Tlhamallang o fenya lehuma

Setswana



Tinyiko Geoffrey Bandi

# Tlhamallang o fenya lehuma

E kwadilwe ke Tinyiko Geoffrey Bandi  
Botaki ka Siyasanga Madyibi



Thanolo ka Motlhabane Modise



Tlhamallang o belegwa kwa lolapeng lwa  
ga Jumbela.  
Batswadi ba gagwe ba dira kwa polaseng.  
Tlhamallang a godisitswe ke Nkokoagwe,  
Mmajonasi, Nkoko Mmajonasi ke  
mmelega rraagwe.



Tlhamallang o tsena sekolo kwa Bonang.  
Bankane ba gagwe ba aga ba mo tshega.  
Ba dira metlae ka diaparo tsa gagwe tse  
di makgasa.  
Ka dinako dingwe o boela gae a lela.





Nkoko Mmajonasi o aga a mo kgothatsa.  
O mo tshepisa gore dilo tse di tla feta.  
Ka dinako dingwe, a sa tshwarwe ke boroko  
bosigo, ka ntlha ya dilo tse.  
Nkokoagwe a tlhola a mo rotloetsa.



Basimane bangwe kwa sekolong ba mo kgerisa. Mmelaelwa yo mogolo ele Delela. Delela a tswa kwa lolapeng lwa ga Zondi. Ba ga Zondi ba na le mabenkele le ditekisi.



Letsatsi lengwe Tlhamallang a boela gae  
a siane.

Hempe ya gagwe ele bohibidu, ka madi  
ebile a lela. A tlhasetswe ke Delela.

Ka gone ena Tlhamallang a gana go binela  
Delela le ditsala tsa gagwe.



Tiragalo e ya go mo tlhasela, ga ya aka ya  
itsagala kwa sekolong.

Mogokgo wa sekolo, o buile le Tlhamallang.

A mmolelela gore a tshamekele kgakala  
le Delela.

Tlhamallang o utlwile botlhoko thata.





Tlhamallang a dira ka natla kwa sekolong.  
A ithuta ka manontlhotlho gore a kgone go  
fetsa dithuto tsa gagwe ka bonako.  
A batla go tswa mo pogisegong e.

Tlhamallang a wetsa dithuto tsa gagwe.  
A tlogela balekane ba le bantsi kwa morago.  
Ba a neng a ithuta nabo kwa sekolong.  
Bangwe ba bona ga ba a fetsa sekolo.





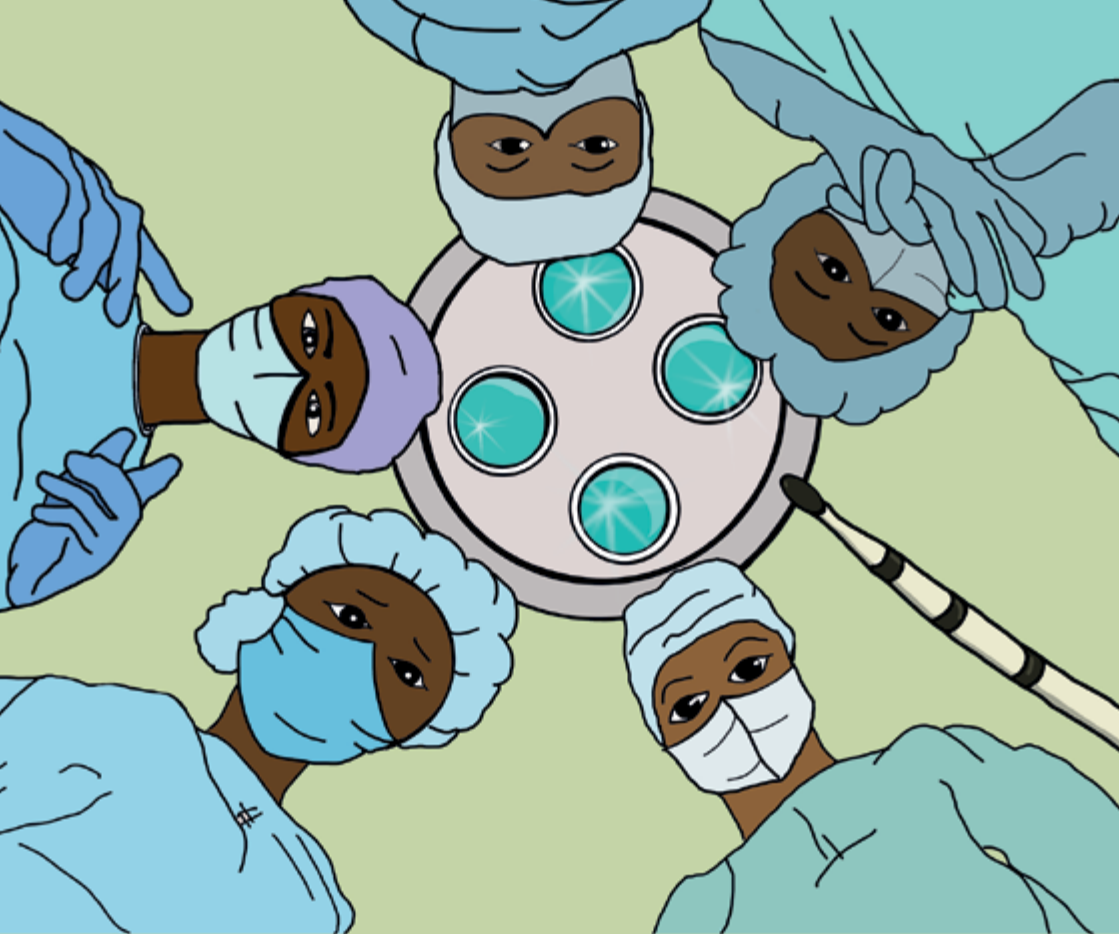
Tlhamallang a dira jaaka ngaka kwa  
Bookelong ba Resilwe.

Bosigo bongwe a bidiwa ka tshoganyetso  
kwa bookelong.

Go le monna, a thuntshitswe mo sehubeng.  
Tlhamallang e le ena fela yo a ka thusang.

Tlhamallang a tabogela kwa phaposing ya  
Bodirelo-karo. A fitlhela monna a goa, ka  
ntlha ya botlhoko, bo a neng a bo utlwa.  
A lebega jaaka sepoko, 'spoko'.  
E le Delela Zondi!





Matlho a Tlhamallang, a tlala dikeledi.  
Madi a mo mafatlheng a Delela, a mo  
gopotsa madi a mo hempeng ya gagwe.  
A gopola Delela ka moo a mmogisitseng,  
kwa sekolong.  
Mme Tlhamallang a tsaya tshweetso, go  
lebala tsa bogologolo, a dira tiro ya gagwe.





Morago ga beke, Delela a kgona go bua.  
A itse fa o pholositswe ke Ngaka Tlhamallang.  
Delela a lela botlhoko mo ebileng a tlhomola  
pele. Ga nna thata gore baaki ba didimatse  
Delela.



Fa Tlhamallang a tsenang ka fa kamoreng ya balwetse, Delela a fologa bolao a khubama. A lela, a kopa tshwarelo mo tseo a di dirileng Tlhamallang. Tlhamallang a mo tshwara ka seatla a mmusetša mo bolaong.



Morago ga dibeke di le pedi, Delela a fola.  
Tlhamallang le Delela ba le balelana tsa kgale.  
Delela a leboga Tlhamallang ka moo a mo  
pholositseng ka teng.

# **DITEBOGO**

## **Mokwadi**

Tinyiko Geoffrey Bandi

## **Motaki**

Siyasanga Madyibi

## **Morulaganyi 1**

Pandelani Claudine Rambau

## **Morulaganyi 2**

Deborah Shilenge

## **Morulaganyi 3**

Rebecca Maluleke

## **Motlhami**

PixelPing Design

## **Mofetodi**

Modise Motlhabane

## **Motlhotlhomisi**

Glanice Masilo



ISBN 978-0-638-00678-0



**basic education**  
Department:  
Basic Education  
REPUBLIC OF SOUTH AFRICA

