



# Madzina a Mukhulu

Mmapadi Mametja

Tshivenda



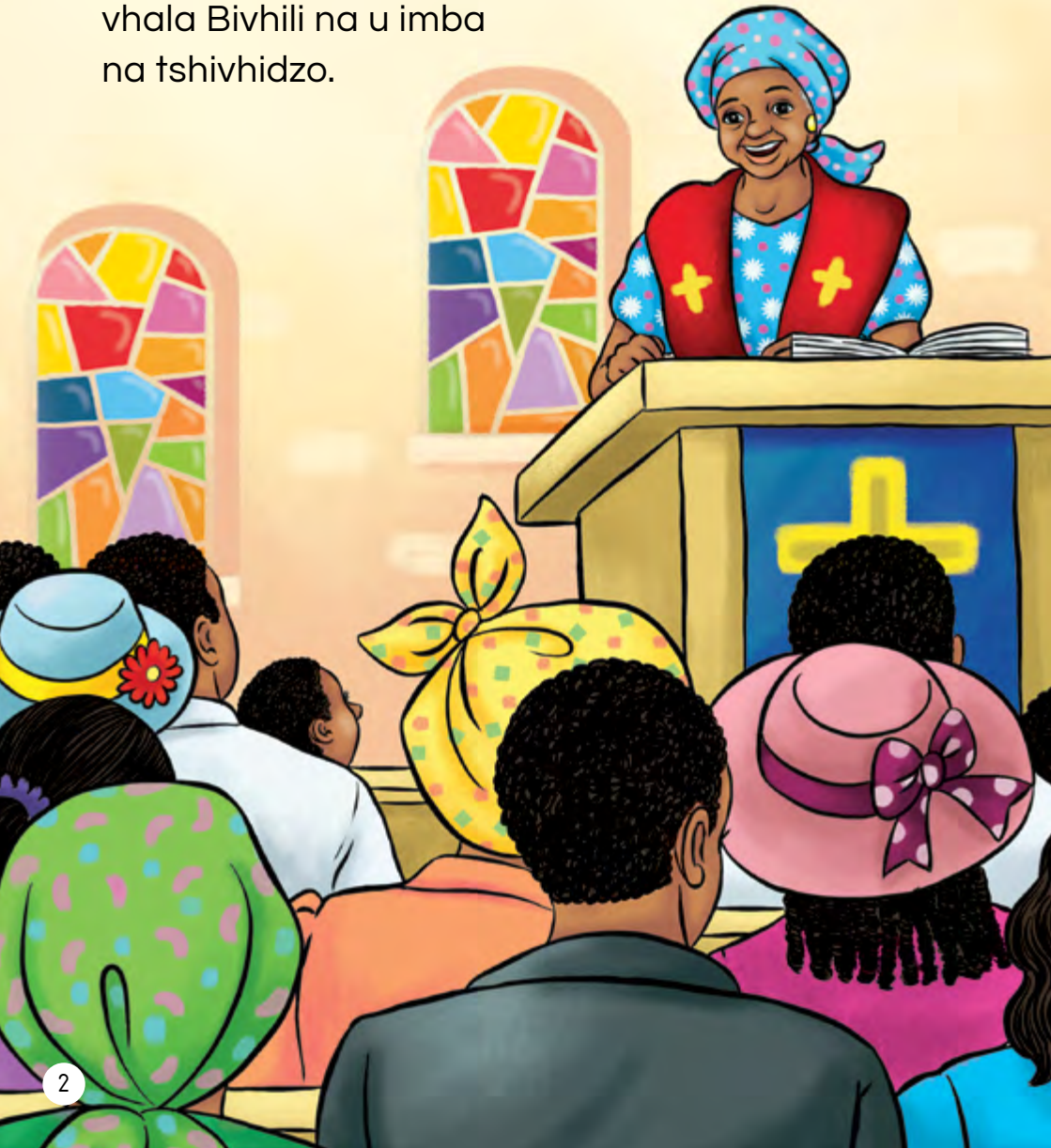
# Madzina a Mukhulu

Yo nwalwa nga Mmapadi Mametja  
Mufanisi Heidi-Kate Greeff



Yo tlatshedzelwa nga Constance Mukondeleli Nembahe

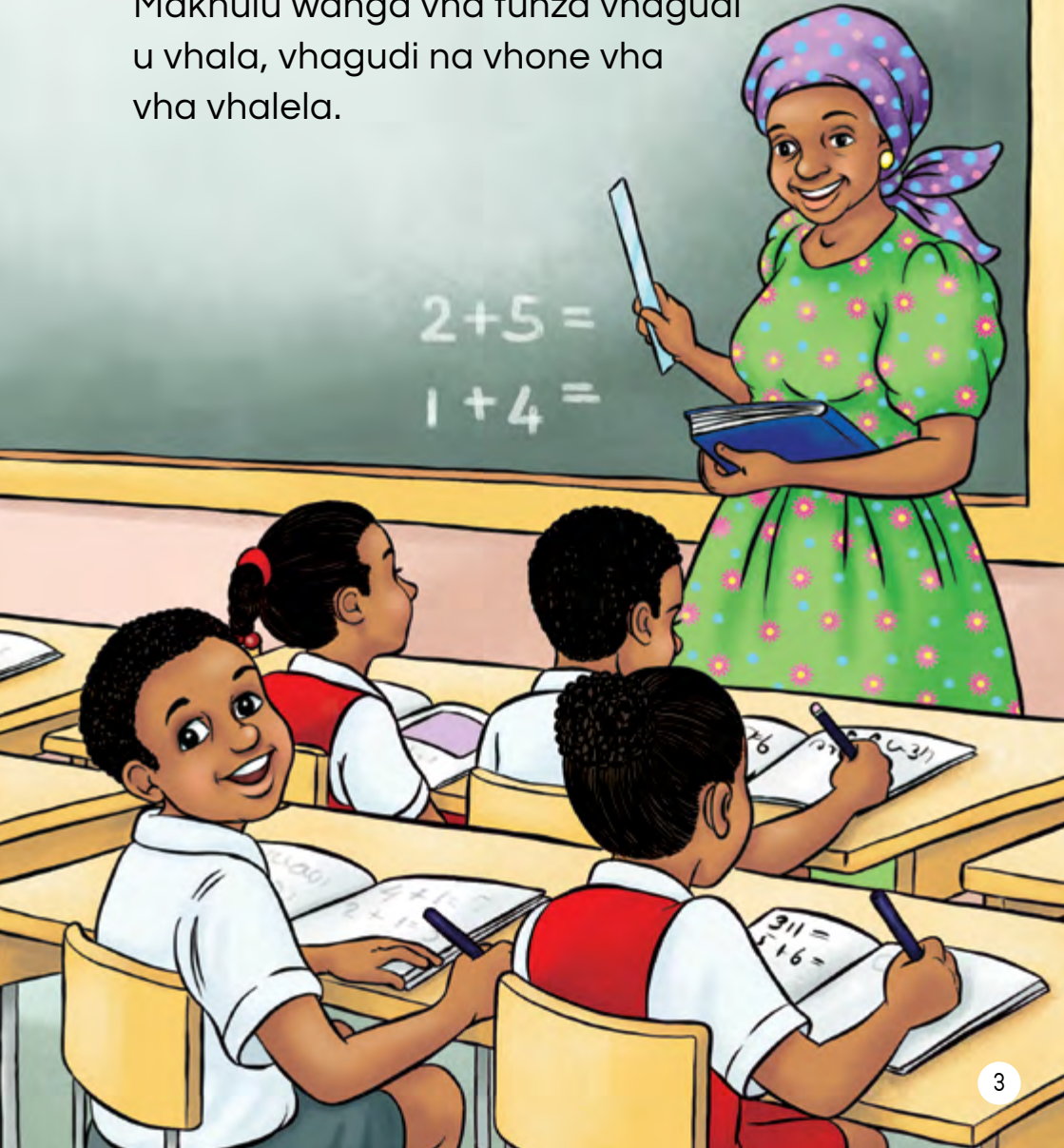
Nwana o vha a tshi khou ya kerekeni na makhulu wawe. Makhulu wanga vha pfi Vhafunzi hangei kerekeni. "Ni nga zwi tenda?" Makhulu wanga vha na dzina l̩iswa l̩i no pfi Vhafunzi. Makhulu wanga vha vhalala Bivhili na u imba na tshivhidzo.



Ra bva kerekeni na makhulu wanga, zwino ri khou ya tshikoloni. Tshikoloni makhulu wanga vha pfi Mudededzi.

Ni nga zwi tenda? Makhulu wanga vha na dzina lisa li no pfi Mudededzi.

Makhulu wanga vha funza vhagudi u vhala, vhagudi na vhone vha vha vhalela.



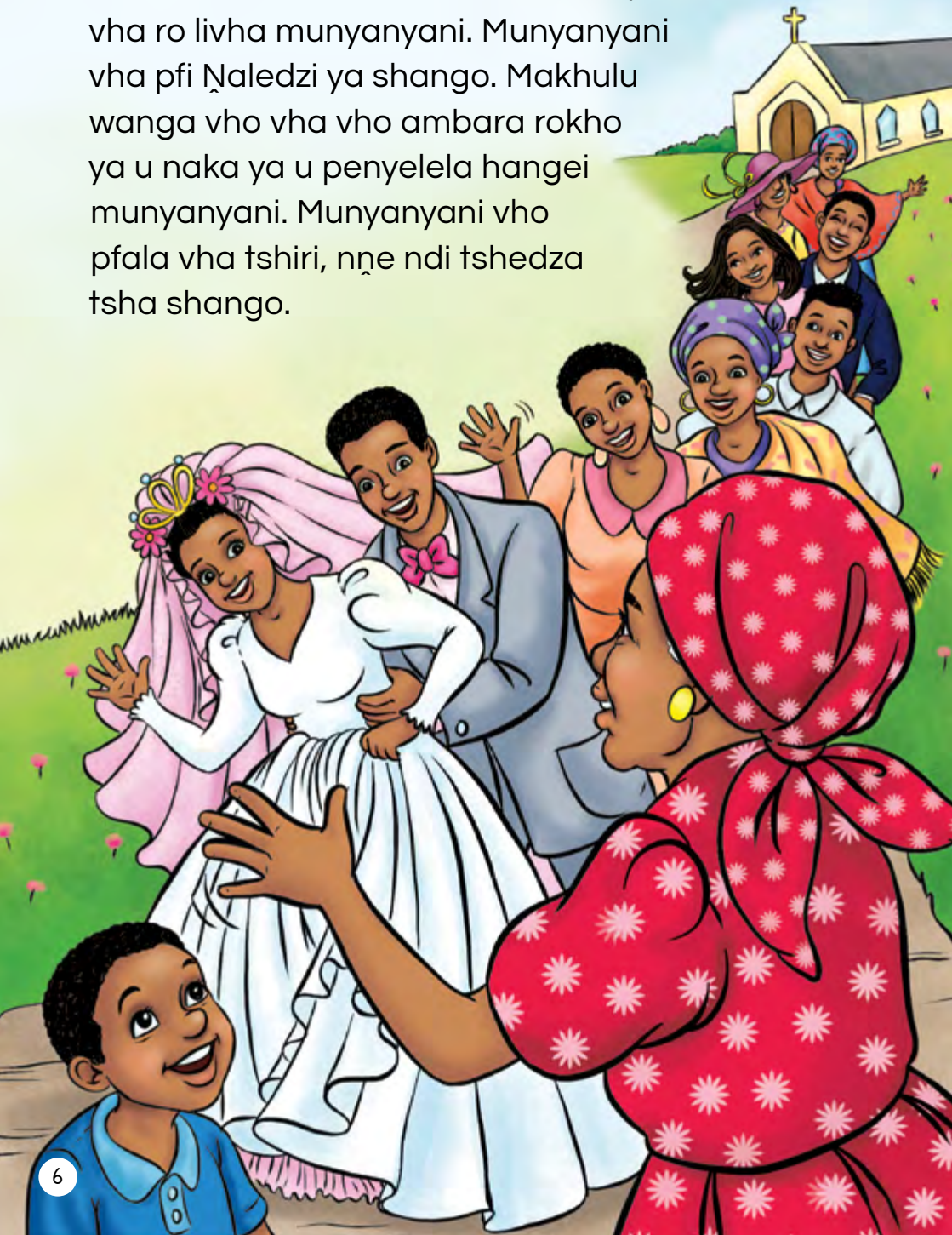
Nhē na makhulu wanga ri bva tshikoloni, ri livha mavhengeleni. Mavhengeleni vha vhidzwa u pfi Murengi. Ni nga zwi tenda? Makhulu wanga vha na dzina liswa vha pfi Murengi. Makhulu wanga vha renga maḽegere, vhurotho, mugayo, tshipinitshi, ḽama na maḽari a tie.



Ri bva mavhengeleni nḡe na makhulu wanga, ri ya u dalela makhulu Vho Tshinakaho. Ri tshi swika muḡini wa makhulu Vho Tshinakaho, makhulu wanga vha na dzina ḡiswa ḡa uri Mungome. Khonani yanga vha ri ndi Mungome ngauri vha amba uri mvula i ḡo na matshelo, nga ngoho i mbo ḡi na. Vha a bvumba zwa tshifhinga tshiḡaho.



Ri tshi bva ha makhulu Tshinakaho, ra vha ro livha munyanyani. Munyanyani vha pfi Naledzi ya shango. Makhulu wanga vho vha vho ambara rokho ya u naka ya u penyelela hangei munyanyani. Munyanyani vho pfala vha tshiri, nṱe ndi tshedza tsha shango.



Zwino ri bva munyanyani, ri livha hayani. Ri tshi khou dzhena shangoni ɿa hashu, muñwe na muñwe o vha a tshi khou vhidzelela makhulu wanga a tshiri, Mudzulapo! Ndi dzina ɿe vha ɿi wana nge vha dzulela u vhudza vhadzulapo uri vhabebi vhavho ndi vhone vha u thoma u dzula kha heɿo shango. Vhana vho thoma luimbo lu no ri: Vhadzulapo, vhadzuli vha vhukuma vho vhuya hayani.





Makhulu wanga vha khou ñwala bugu nga ha madzina avho othe.

Ndi khou vhala bugu dza makhulu wanga.

Ndi tshi khou vhala, ndo vhona khonani dzanga dzi tshi khou tamba.

Nda mbo ñi vhea bugu fhasi nda ya kha khonani dzanga.



“Ndi khou humbela thuso! Bugu dza makhulu wanga dzi ngafhi? Bugu dza makhulu wanga dzo ngalangala. Ndi khou humbela thuso! Vhathu vho tswa bugu dza makhulu wanga. Ndi khou toḽa thuso, vhathu khevhalaa! Vha khou shavha vho fara bugu dza makhulu wanga.”



Makhulu wanga vho sinyuwa.  
Vho vha vha tshi mbudza uri u vhala na u  
tamba a zwi tshimbili zwothe.  
Ndo vha ndo tea ndo thetshesela makhulu  
wanga, Zwino khezwi, bugu dzo ngalangala.  
Makhulu wanga vha ri ndi dzi tsoḽe u swika ndi  
tshi dzi wana.



Ndo vha ndo t̄anganana, nda humbula uri  
ndi khwiṅe ndo ya thavhani ndi ḡi pose fhasi  
ndi henengei. Ndi tshee ndo ima, nda pfa  
muthu a tshi khou fara bannda ḡanga, a tshi  
khou nthivhela uri ndi songo ḡihuvhadza. Nda  
sedzasedza, nda wana makhulu wanga vho  
fara bugu dzoṯhe dza rathi. Ra kwambatelana  
fhedzi makhulu wanga vha isa  
phanḡa na zwe vha vha vho  
no zwi amba, hu tea u vha  
na tshifhinga tsha u vhala  
na tshifhinga tsha  
u tamba.



# U DZHIELA NṲHA

**Yo nṲwalwa nga**  
Mmapadi Mametja

**Mufanisi**  
Heidi-Kate Greeff

**Mudzudzanyi 1**  
Pandelani Claudine Rambau

**Mudzudzanyi 2**  
Isabel Seakamela

**Mudzudzanyi 3**  
Irene Masemola

**Muoli**  
PixelPing Design

**MuṲalutshedzeli**  
Mukondleleli Constance NṲmbahe

**MukhwaṲhisedzi**  
Tshililo NṲtshandama



ISBN 978-0-638-00699-5



basic education  
Department:  
Basic Education  
REPUBLIC OF SOUTH AFRICA

